



Manuale d'installazione
Installation Manual

WELLNESS
SERIES

Inox



Kit doccia Incasso completo

1 o 2 vie

Concealed Kit Mix Shower

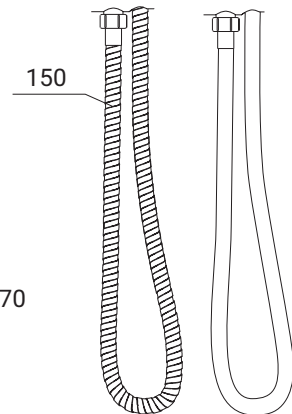
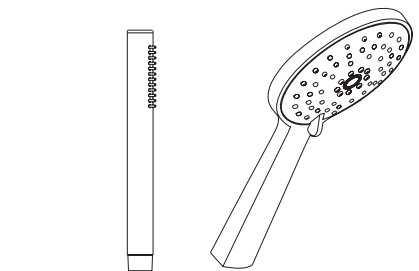
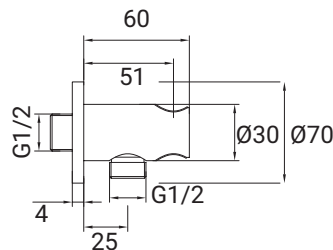
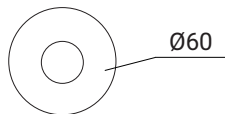
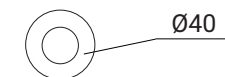
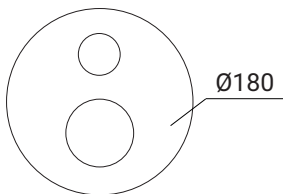
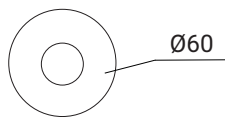
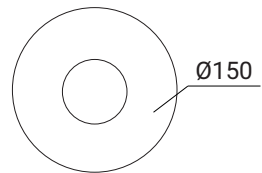
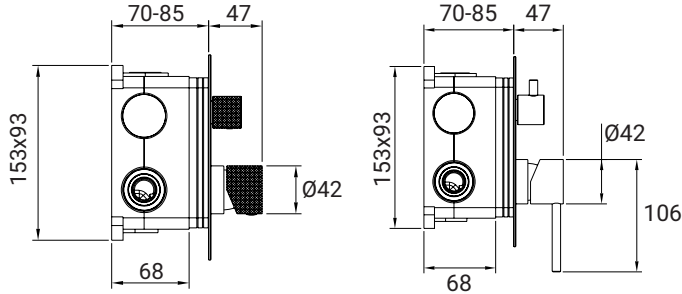
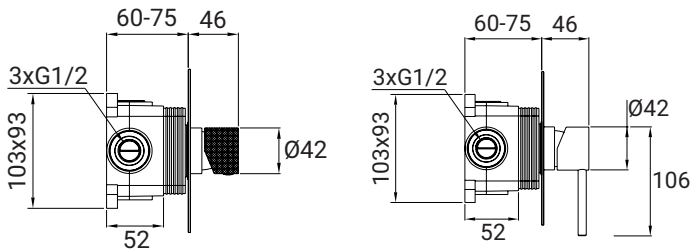
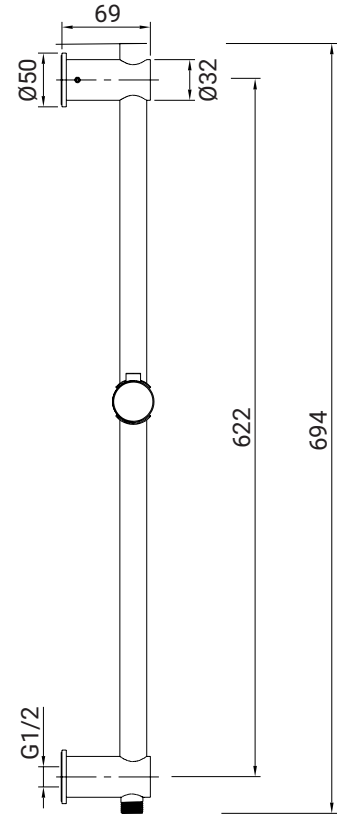
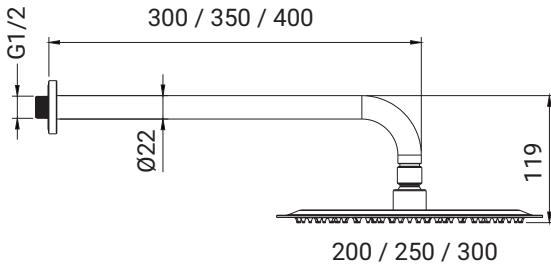
1 or 2 way

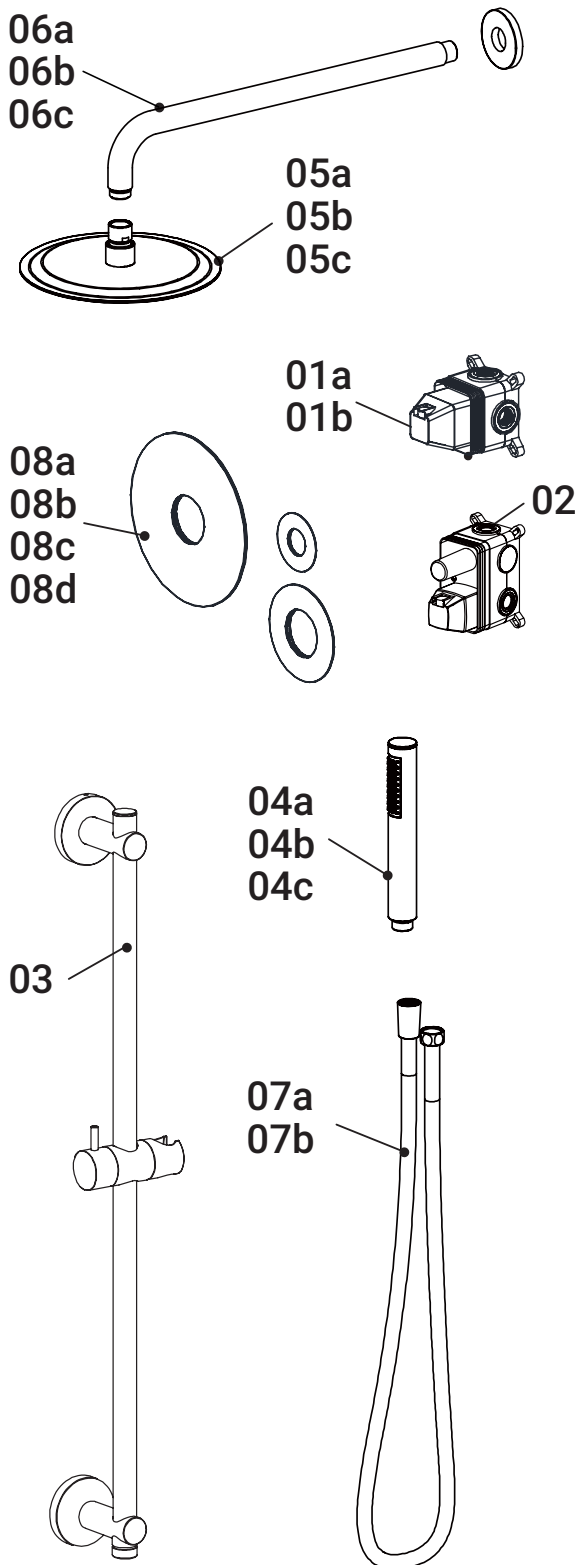


Indice

Index

Dimensioni <i>Dimensions</i>	pag. 3
Ricambi <i>Spare parts</i>	pag. 4
Installazione <i>Installation</i>	pag. 5/9
Manutenzione Generale <i>General Maintenance</i>	pag. 10





Nr.	Descrizione/Description	Codice/ Code
01a	Cartuccia termostatica maniglia JT <i>Thermostatic cartridge for JT handle</i>	CA0018
01b	Cartuccia termostatica per maniglia ST <i>Thermostatic cartridge for ST handle</i>	CA0013
02	Deviatore manuale <i>Manual Diverter</i>	CA0019
03	Asta saliscendi Inox spazzolato <i>Sliding bar Brushed Inox</i>	WSSAI
04a	Doccetta solo tettelelle Inox spazzolato <i>Hand shower only nipples Brushed Inox</i>	WSDTI
04b	Doccetta Inox spazzolato <i>Hand shower Brushed Inox</i>	WSDT1I
04c	ABS 3 funzioni Inox spazzolato <i>Brushed Inox ABS shower hand, 3 functions</i>	WSDTFI
05a	Soffione Inox ø 200 mm <i>Inox Head shower ø 200 mm</i>	WSST20I
05b	Soffione Inox ø 250 mm <i>Inox Head shower ø 250 mm</i>	WSST25I
05c	Soffione Inox ø 300 mm <i>Inox Head shower ø 300 mm</i>	WSST30I
06a	Braccio per soffione Inox 300 mm <i>Inox arm for head shower 300 mm</i>	WSBR30I
06b	Braccio per soffione Inox 350 mm <i>Inox arm for head shower 350 mm</i>	WSBR35I
06c	Braccio per soffione Inox 400 mm <i>Inox arm for head shower 400 mm</i>	WSBR40I
07a	Flessibile 1,5 m Inox per doccetta manuale <i>Flexible hose 1,5 m Inox for hand spray</i>	FL0004
07b	Flessibile 1,5 m PVC per doccetta manuale <i>Flexible hose 1,5 m PVC for hand spray</i>	FL0005
08a	Piastra copertura per corpo incasso 1 via, Ø 150 mm Inox spazzolato <i>Brushed Inox Cover plate for 1 way concealed body, Ø 150 mm</i>	WSPIT150I
08b	Piastra copertura cartuccia per corpo incasso 1 & 2 vie, Ø 60 mm - Inox spazzolato <i>Brushed Inox cartridge Cover plate for 1 & 2 ways concealed body, Ø 60 mm</i>	WSPIT60I
08c	Piastra copertura per corpo incasso 2 vie, Ø 180 mm - Inox spazzolato <i>Brushed Inox Cover plate for 2 ways concealed body, Ø 180 mm</i>	WSPIT180I
08d	Piastra copertura deviatore per corpo incasso 2 vie, Ø 40 mm - Inox spazzolato <i>Brushed Inox diverter Cover plate for 2 ways concealed body, Ø 40 mm</i>	WSPIT40I



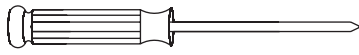
Prima dell'installazione *Before Installation*



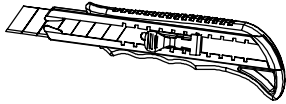
Rimuovi tutto il contenuto dalla confezione e verificane la completezza.

Remove all contents from the package and check for completeness.

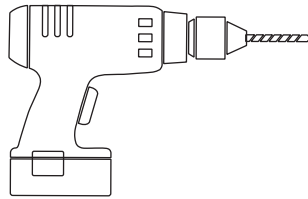
Strumenti necessari *Tools you need*



Cacciavite
Cross screwdriver



Taglierino
Cutter



Trapano
Drill



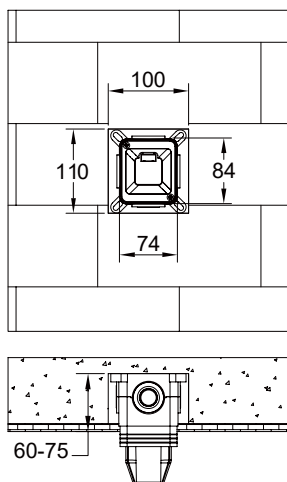
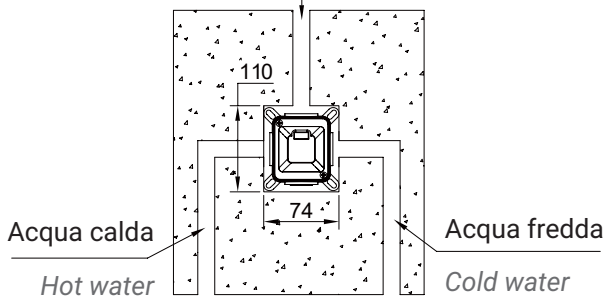
Nastro di teflon
Teflon Tape



STEP 1

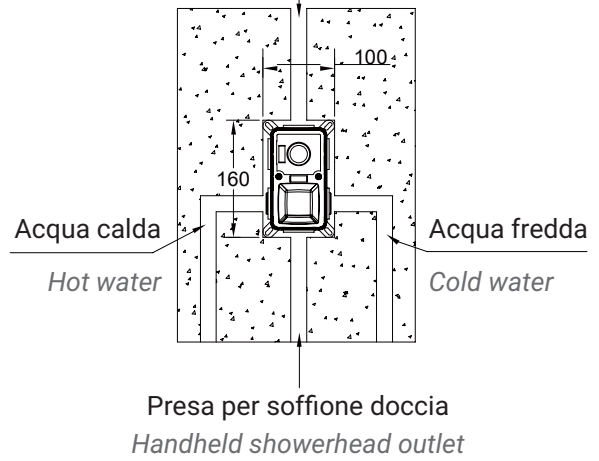
1 VIA

Uscita doccia / Presa per soffione doccia
Shower outlet / Handheld showerhead outlet

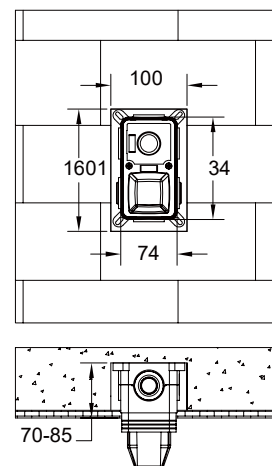


2 VIE

Uscita doccia
Shower outlet

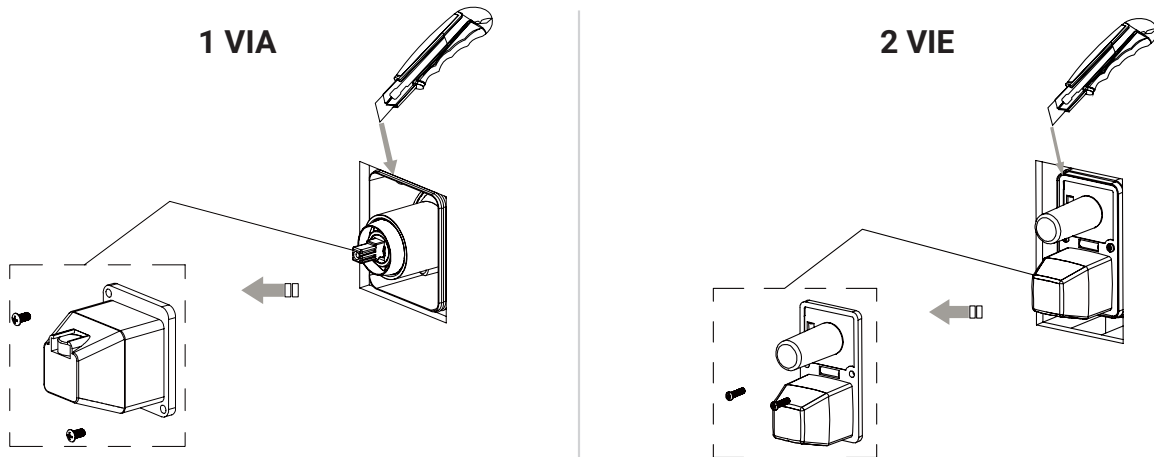


Preso per soffione doccia
Handheld showerhead outlet





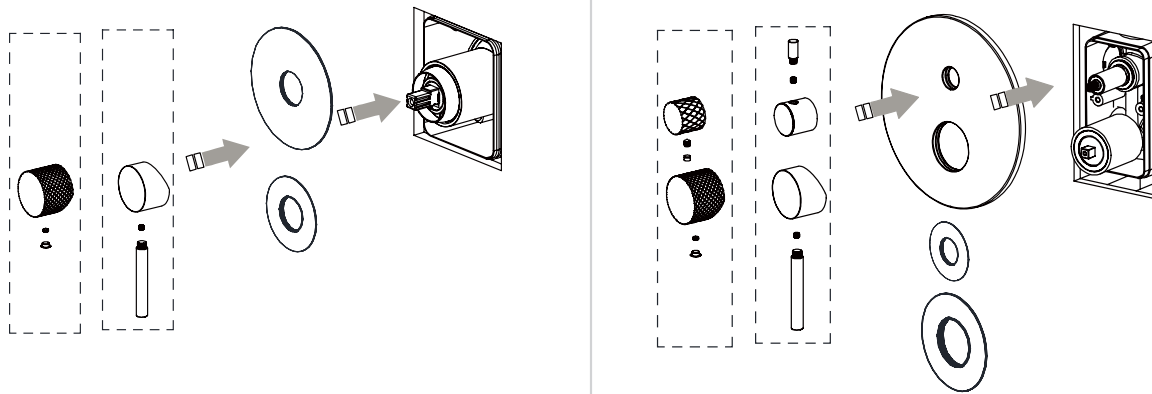
STEP 2



Rimuovi la scatola protettiva

Remove the protective box

STEP 3



Sono disponibili due opzioni di copertura della maniglia.
Installare il pannello e la maniglia sul corpo principale in sequenza,
assicurandosi che l'orientamento di installazione sia corretto.

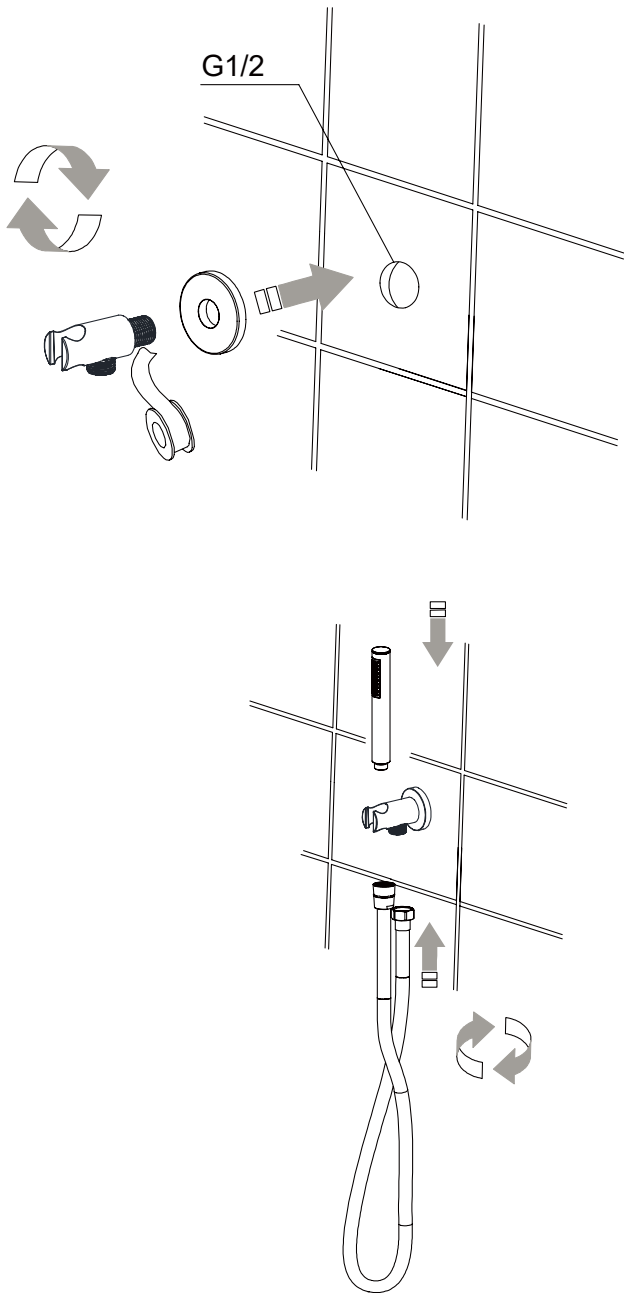
*There are two handle cover options. Install the panel and handle onto the main body in sequence,
ensuring the installation orientation is correct.*



STEP 4

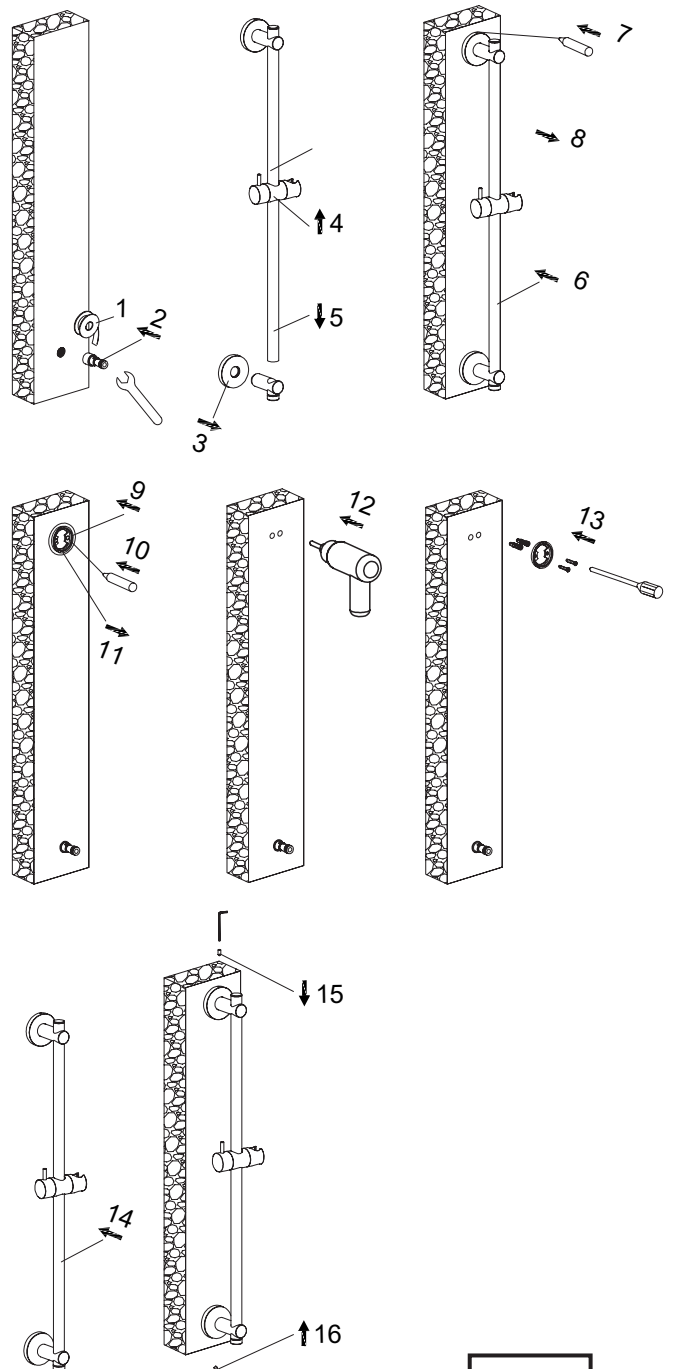
DOCETTA

HAND SHOWER



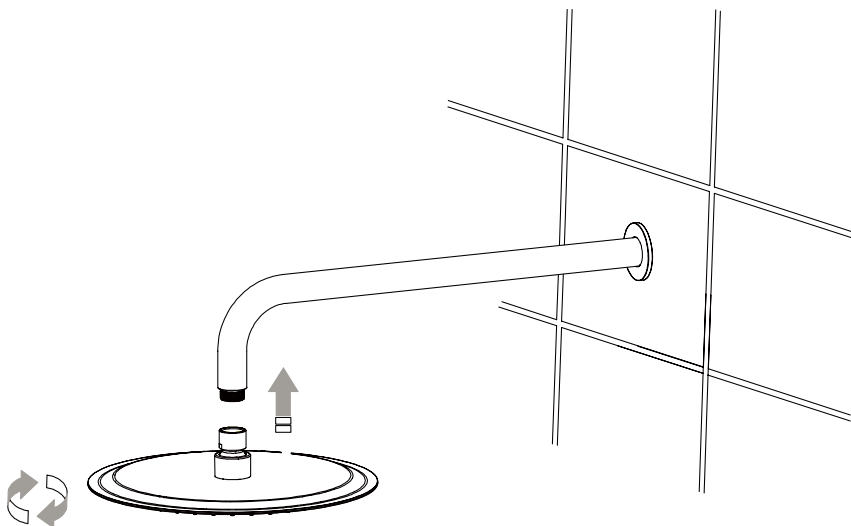
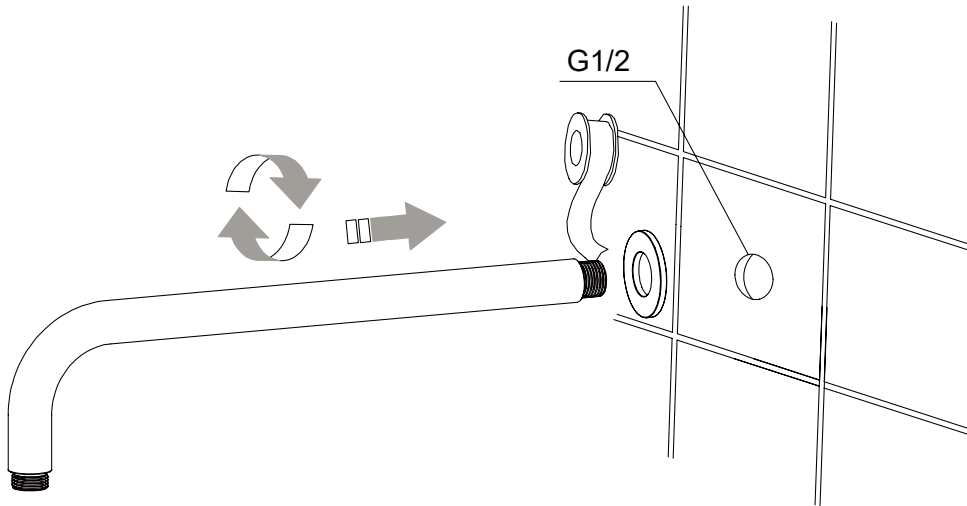
SALISCENDI

SLIDING BAR





STEP 5





Non utilizzare, per la pulizia, in nessun caso acidi, solventi, candeggina, ammoniaca o prodotti contenenti acidi e spugne o spazzole con effetto abrasivo.

Never use acids, solvents, bleach, ammonia or products containing acids and sponges or brushes with an abrasive effect for cleaning.



Per un corretto mantenimento dei prodotti si consiglia una pulizia periodica attraverso detergenti neutri o acqua e sapone.

For correct maintenance of the products, periodic cleaning is recommended using neutral detergents or soap and water.



Per evitare la formazione di depositi calcarei sciacquare sempre le superfici dopo lavaggio con abbondante acqua e asciugare accuratamente con un panno morbido.

To avoid the formation of limescale deposits, always rinse the surfaces after washing with plenty of water and dry carefully with a soft cloth.